

KINTEK

DRIVEN TOOLS FOR CNC LATHES TO DIN 69880

PORTAUTENSILI ROTANTI VDI PER TORNI CNC SECONDO DIN 69880



DRIVEN TOOLS FOR CNC LATHES TO DIN 69880



ANGETRIEBENE WERKZEUGHALTER FÜR
CNC-DREHMASCHINEN NACH DIN 69880



ПРИВОДНЫЕ ТОКАРНЫЕ ГОЛОВКИ ПО
DIN 69880 ДЛЯ СТАНКОВ С ЧПУ



PORTE-OUTILS TOURNANTS VDI
POUR TOURS CNC SELON DIN 69880



PORTAUTENSILI ROTANTI VDI
PER TORNII CNC SECONDO DIN 69880



符合DIN 69880标准的CNC数控车床驱动工具



● **DIN 5480** pagg. **366-369**

● **DIN 5482** pagg. **370-373**

● **DIN 1809** pagg. **374-377**

● **TOEM BARUFFALDI** pagg. **378-381**

● **HAAS** pagg. **382-385**

● **OKUMA BMT 60** pagg. **386-391**

● **MAZAK** pagg. **392-393**

● **MORI SEIKI** pagg. **394-395**

● **NAKAMURA-TOME
BMT55 - BMT65** pagg. **396-399**

● **DOOSAN BMT55/65** pagg. **400-403**



DRIVEN TOOLHOLDERS

WE WOULD LIKE TO INFORM YOU THAT YOU CAN CONSULT THE AVAILABILITY OF THE DRIVEN TOOLHOLDERS FOR EACH TYPE OF MACHINE TOOL DIRECTLY FROM THE WEBSITE **WWW.KINTEK.IT**.
HERE ARE ONLY SOME EXAMPLES:



ANGETRIEBENE WERKZEUGE

WIR MÖCHTEN INFORMIEREN, SIE KÖNNEN NACH DER VERFÜGBARKEIT DER ANGETRIEBENEN WERKZEUGHALTER FÜR JEDE TYPOLOGIE VON WERKZEUGMASCHINE DIREKT AUS DER WEBSEITE **WWW.KINTEK.IT** FRAGEN.
HIER SIND NUR EINIGE BEISPIELE:



ПРИВОДНЫЕ ИНСТРУМЕНТЫ

Мы хотели бы Вас проинформировать, что Вы можете получить у нас консультацию по наличию и другим приводных головок любого типа на нашем сайте **WWW.KINTEK.IT**



PORTE-OUTIL TOURNANTS

NOUS VOUS INFORMONS QUE VOUS POUVEZ RECHERCHER LA DISPONIBILITÉ DES PORTE-OUTILS TOURNANTS POUR CHAQUE TYPOLOGIE DE MACHINE-OUTIL DIRECTEMENT À LA PAGE WWW.KINTEK.IT.
VOILÀ SEULEMENT QUELQUES EXEMPLES:



PORTAUTENSILI MOTORIZZATI

VI INFORMIAMO CHE POTETE CONSULTARE LA DISPONIBILITA' DI PORTAUTENSILI MOTORIZZATI PER OGNI TIPOLOGIA DI MACCHINA UTENSILE DIRETTAMENTE DAL SITO WWW.KINTEK.IT,
QUI DI SEGUITO SOLO ALCUNI ESEMPI:

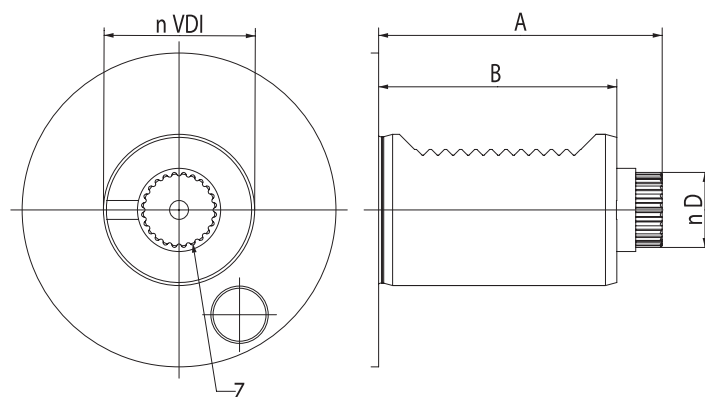


驱动刀柄

您可以通过访问网站 WWW.KINTEK.IT
了解每种机器所配驱动工具柄的全部产品，
举例如下

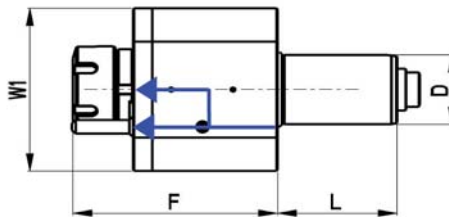
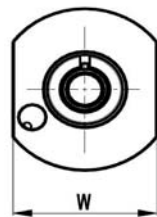
DIN 5480

VDI	A	B	D	Z
20	51	35	10,8	12
25	57	48	13,8	16
30	67	55	15,8	18
40	75	63	19,8	24
50	93	78	23,8	18



AXIAL BOHR- UND FRÄSKOPF TÊTE DE PERÇAGE ET FRAISAGE
 AXIAL DRILLING AND MILLING HEAD PORTAUTENSILE MOTORIZZATO ASSIALE
 АКСИАЛЬНАЯ СВЕРЛИЛЬНО-ФРЕЗЕРНАЯ ГОЛОВКА 轴向钻铣头

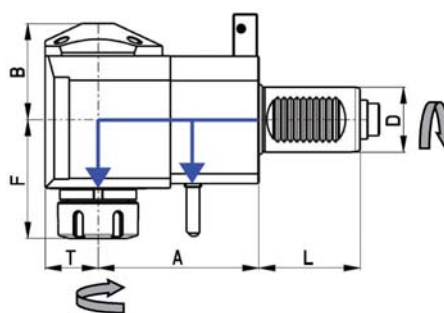
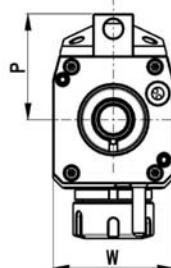
DIN 5480 SAUTER



Code N.	D	Clamping application	Internal cooling	F	L	W	W1	Max Torque (Nm)	Max Speed (rpm)	i	P bar
116-43001	30	ER25	no	87	55	64	68	28	6000	1:1	-
116-43002	30	ER25	yes	87	55	64	68	28	6000	1:1	20
116-44001	40	ER25	no	105	63	80	86	50	6000	1:1	-
116-44002	40	ER25	yes	105	63	80	86	50	6000	1:1	20
116-44003	40	ER32	no	108	63	80	86	50	6000	1:1	-
116-44004	40	ER32	yes	108	63	80	86	50	6000	1:1	20

RADIAL BOHR- UND FRÄSKOPF TÊTE DE PERÇAGE ET FRAISAGE RADIAL
 RADIAL DRILLING AND MILLING HEAD PORTAUTENSILE MOTORIZZATO RADIALE
 РАДИАЛЬНАЯ СВЕРЛИЛЬНО-ФРЕЗЕРНАЯ ГОЛОВКА 径向钻铣头

DIN 5480 SAUTER



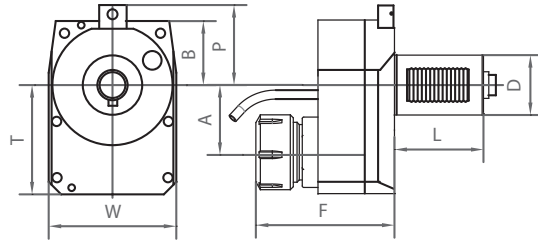
Code N.	D	Clamping application	Internal cooling	Direction	A	B	F	L	P	T	W	Max Torque (Nm)	Max Speed (rpm)	i	P bar
116-43003	30	ER25	no	right	55	48	63	55	56	29	64	28	6000	1:1	-
116-43004	30	ER25	yes	right	55	51	63	55	56	29	64	28	6000	1:1	20
116-43005	30	ER25	no	right	85	48	63	55	56	29	64	28	6000	1:1	-
116-43006	30	ER25	yes	right	85	51	63	55	56	29	64	28	6000	1:1	20
116-46001	30	ER25	no	right	100	48	63	55	56	29	64	28	6000	1:1	-
116-46002	30	ER25	yes	right	100	51	63	55	56	29	64	28	6000	1:1	20
116-44005	40	ER25	no	right	80	59	70	63	65	36	75	50	6000	1:1	-
116-44006	40	ER25	yes	right	80	62	70	63	65	36	75	50	6000	1:1	20
116-44007	40	ER25	no	right	100	59	70	63	65	36	75	50	6000	1:1	-
116-44008	40	ER25	yes	right	100	62	70	63	65	36	75	50	6000	1:1	20
116-44009	40	ER32	no	right	80	59	74	63	65	36	75	50	6000	1:1	-
116-44010	40	ER32	yes	right	80	62	74	63	65	36	75	50	6000	1:1	20
116-44011	40	ER32	no	right	100	59	74	63	65	36	75	50	6000	1:1	-
116-44012	40	ER32	yes	right	100	62	74	63	65	36	75	50	6000	1:1	20

* Linksausführung auf Anfrage * Left version on enquiry * Левое исполнение по запросу * Versione gauche sur demande * A richiesta la versione sinistra * 左边版本可查。

AXIAL BOHR- UND FRÄSKOPF, ZURÜCKGESETZT
 OFFSET AXIAL DRILLING AND MILLING HEAD
 АКСИАЛЬНАЯ СВЕРЛИЛЬНО-ФРЕЗЕРНАЯ ГОЛОВКА СО СМЕЩЕННЫМ ЦЕНТРОМ

TÊTE DE PERÇAGE ET FRAISAGE AXIAL, ARRIÈRE
 PORTAUTENSILE MOTORIZZATO ASSIALE DISASSATO
 轴向钻铣头.偏移

DIN 5480

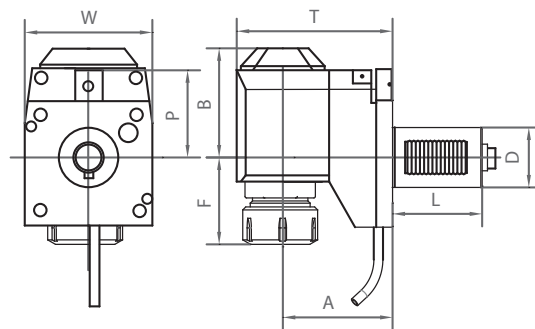


Code N.	D	ER	Cooling	A	B	F	L	P	T	W	Max:Torque Nm	Nmax	I(rev.)
116-43007	30	ER25	EXT	50	47	106	55	56	90	78	14	12000	1:2

RADIAL BOHR- UND FRÄSKOPF, ZURÜCKGESETZT
 OFFSET RADIAL DRILLING AND MILLING HEAD
 РАДИАЛЬНАЯ СВЕРЛИЛЬНО-ФРЕЗЕРНАЯ ГОЛОВКА СО СМЕЩЕНИЕМ

TÊTE DE PERÇAGE ET FRAISAGE RADIALE, ARRIÈRE
 PORTAUTENSILE MOTORIZZATO RADIALE ARRETRATO
 径向钻铣头.偏移

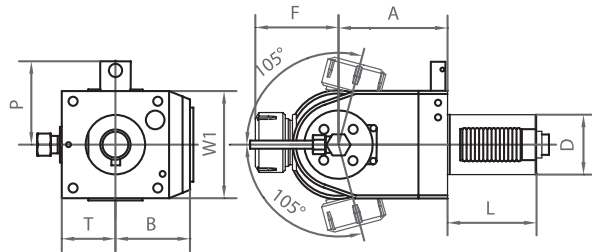
DIN 5480



Code N.	D	ER	Cooling	A	B	F	L	P	T	W	Max: Torque Nm	Nmax	I	P bar
116-43008	30	ER25	EXT	75	71	40	55	56	104	64	28	6000	1:1	-
116-43009	30	ER25	EXT+INT	75	74	40	55	56	104	64	28	6000	1:1	20
116-44014	40	ER25	EXT	120	92	37	63	65	156	75	50	6000	1:1	-
116-44015	40	ER25	EXT+INT	120	95	37	63	65	156	75	50	6000	1:1	20
116-44016	40	ER32	EXT	120	92	41	63	65	156	75	50	6000	1:1	-
116-44017	40	ER32	EXT+INT	120	95	41	63	65	156	75	50	6000	1:1	20

AXIAL-RADIAL BOHR-UND FRASKOPF TÊTE DE PERÇAGE ET FRAISAGE AXIAL-RADIAL
 AXIAL-RADIAL DRILLING AND MILLING HEAD PORTAUTENSILE MOTORIZZATO ASSIALE-RADIALE
 АКСИАЛЬНО-РАДИАЛЬНАЯ ПРИВОДНАЯ ГОЛОВКА ДЛЯ СВЕРЛ И ФРЕЗ 轴-径向钻头

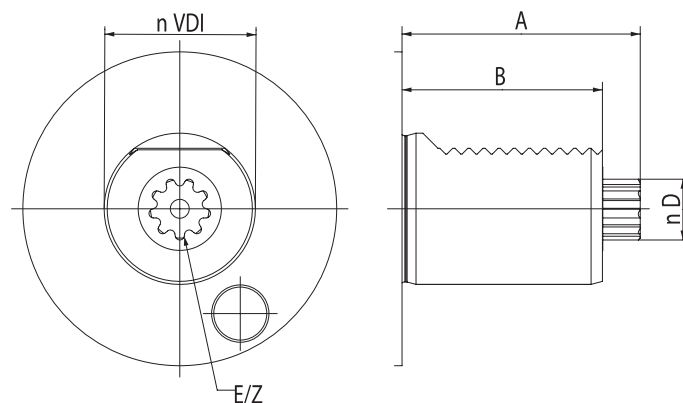
DIN 5480



Code N.	D	ER	Internal cooling	Direction	A	B	F	L	P	T	W1	Max: Torque Nm	Ratio	N max	P bar
116-43040	30	ER16	no	right/left	79	59	43	55	56	40	64	16	1:1	6000	-
116-43041	30	ER16	yes	right/left	86	59	43	55	56	40	64	16	1:1	6000	20
116-54021	40	ER25	no	right/left	79	59	63	63	65	40	78	16	1:1	6000	-
116-54022	40	ER25	yes	right/left	86	59	63	63	65	40	78	16	1:1	6000	20

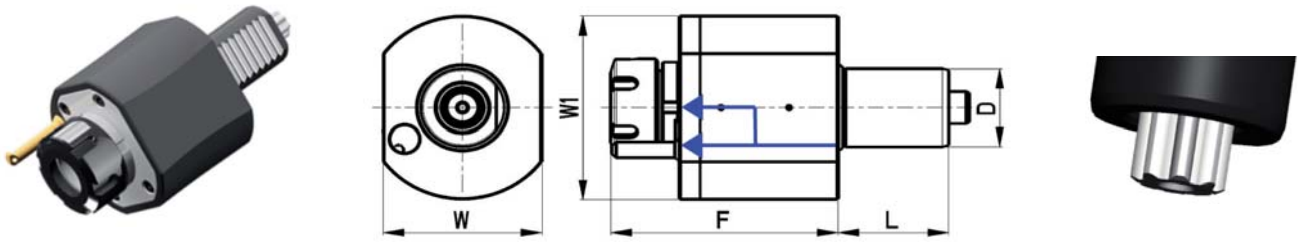
DIN 5482

VDI	A	B	D	E	Z
30	55	45	14,5	B15X12	8
40	63	53	16,5	B17X14	9
50	93	78	19,5	B20X17	11
60	108	94	24,5	B25X22	14



AXIAL BOHR- UND FRÄSKOPF TÊTE DE PERÇAGE ET FRAISAGE
 AXIAL DRILLING AND MILLING HEAD PORTAUTENSILE MOTORIZZATO ASSIALE
 АКСИАЛЬНАЯ СВЕРЛИЛЬНО-ФРЕЗЕРНАЯ ГОЛОВКА 轴向钻铣头

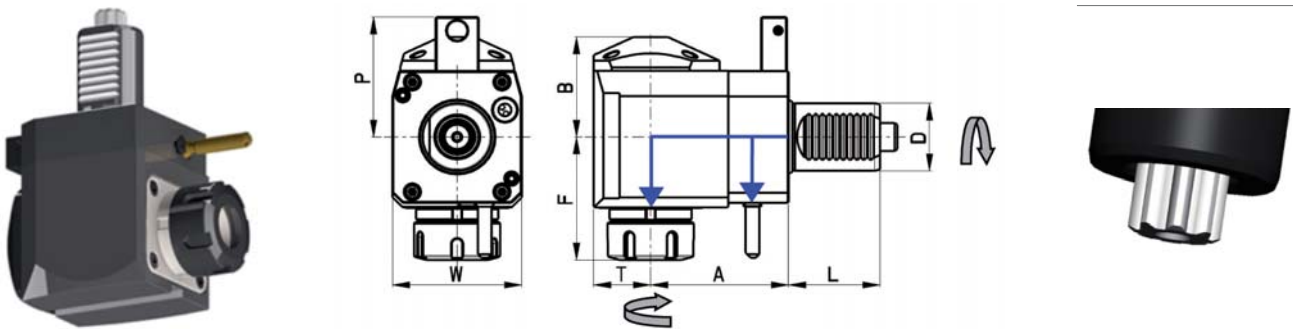
DIN 5482 SAUTER



Code N.	D	Clamping application	Internal cooling	F	L	W	W1	Max Torque (Nm)	Max Speed (rpm)	i	P bar
116-43010	30	ER25	no	87	45	64	68	28	6000	1:1	-
116-43011	30	ER25	yes	87	45	64	68	28	6000	1:1	20
116-44018	40	ER25	no	105	53	80	86	50	6000	1:1	-
116-44019	40	ER25	yes	105	53	80	86	50	6000	1:1	20
116-44020	40	ER32	no	108	53	80	86	50	6000	1:1	-
116-44021	40	ER32	yes	108	53	80	86	50	6000	1:1	20

RADIAL BOHR- UND FRÄSKOPF TÊTE DE PERÇAGE ET FRAISAGE RADIAL
 RADIAL DRILLING AND MILLING HEAD PORTAUTENSILE MOTORIZZATO RADIALE
 РАДИАЛЬНАЯ СВЕРЛИЛЬНО-ФРЕЗЕРНАЯ ГОЛОВКА 径向钻铣头

DIN 5482 SAUTER

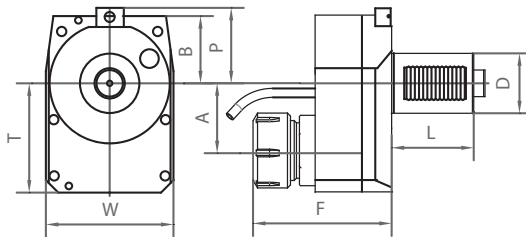


Code N.	D	Clamping application	Internal cooling	Direction	A	B	F	L	P	T	W	Max Torque (Nm)	Max Speed (rpm)	i	P bar
116-43012	30	ER25	no	right	55	48	63	45	48	26	64	28	6000	1:1	-
116-43013	30	ER25	yes	right	55	51	63	45	48	26	64	28	6000	1:1	20
116-44022	40	ER25	no	right	80	59	70	53	71	33	75	50	6000	1:1	-
116-44023	40	ER25	yes	right	80	62	70	53	71	33	75	50	6000	1:1	20
116-44024	40	ER32	no	right	80	59	74	53	71	33	75	50	6000	1:1	-
116-44025	40	ER32	yes	right	80	62	74	53	71	33	75	50	6000	1:1	20

* Linksausführung auf Anfrage * Left version on enquiry * Левое исполнение по запросу * Versione gauche sur demande * A richiesta la versione sinistra * 左边版本可查。

AXIAL BOHR- UND FRÄSKOPF, ZURÜCKGESETZT TÊTE DE PERÇAGE ET FRAISAGE AXIAL, ARRIÈRE
 OFFSET AXIAL DRILLING AND MILLING HEAD PORTAUTENSILE MOTORIZZATO ASSIALE DISASSATO
 АКСИАЛЬНАЯ СВЕРЛИЛЬНО-ФРЕЗЕРНАЯ ГОЛОВКА СО СМЕЩЕННЫМ ЦЕНТРОМ 轴向钻铣头, 偏移

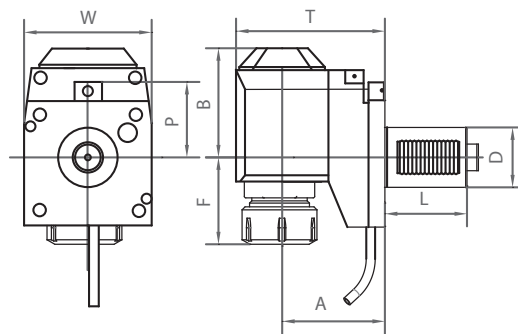
DIN 5482



Code N.	D	ER	Cooling	A	B	F	L	P	T	W	Max:Torque Nm	Nmax	I (rev.)
116-43014	30	ER25	EXT	50	40	106	45	48	90	78	14	12000	1:2

RADIAL BOHR- UND FRÄSKOPF, ZURÜCKGESETZT TÊTE DE PERÇAGE ET FRAISAGE RADIALE, ARRIÈRE
 OFFSET RADIAL DRILLING AND MILLING HEAD PORTAUTENSILE MOTORIZZATO RADIALE ARRETRATO
 РАДИАЛЬНАЯ СВЕРЛИЛЬНО-ФРЕЗЕРНАЯ ГОЛОВКА СО СМЕЩЕНИЕМ 径向钻铣头, 偏移

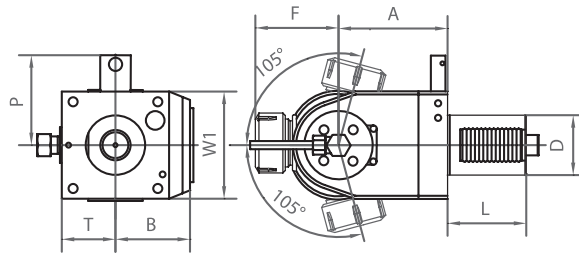
DIN 5482



Code N.	D	ER	Internal cooling	A	B	F	L	P	T	W	Max: Torque Nm	Nmax	I	P bar
116-43015	30	ER25	no	75	71	40	45	48	104	64	28	6000	1:1	-
116-43016	30	ER25	yes	75	74	40	45	48	104	64	28	6000	1:1	20
116-46003	40	ER25	no	120	92	37	53	71	156	75	50	6000	1:1	-
116-46004	40	ER25	yes	120	95	37	53	71	156	75	50	6000	1:1	20
116-46005	40	ER32	no	120	92	41	53	71	156	75	50	6000	1:1	-
116-46006	40	ER32	yes	120	95	41	53	71	156	75	50	6000	1:1	20

AXIAL-RADIAL BOHR-UND FRASKOPF TÊTE DE PERCAGE ET FRAISAGE AXIAL-RADIAL
 AXIAL-RADIAL DRILLING AND MILLING HEAD PORTAUTENSILE MOTORIZZATO ASSIALE-RADIALE
 АКСИАЛЬНО-РАДИАЛЬНАЯ ПРИВОДНАЯ ГОЛОВКА ДЛЯ СВЕРЛ И ФРЕЗ 轴-径向钻头

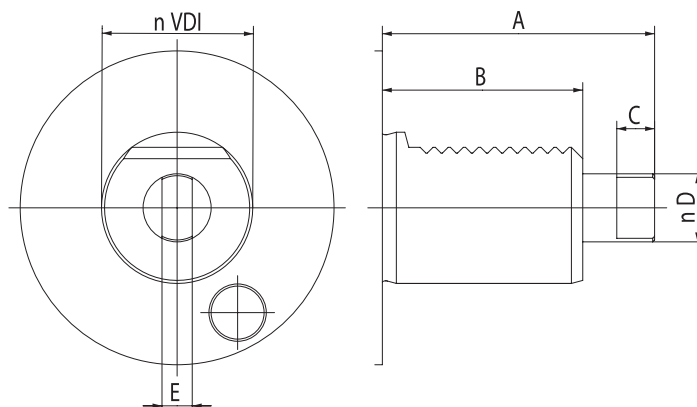
DIN 5482



Code N.	D	ER	Internal cooling	Direction	A	B	F	L	P	T	W1	Max: Torque Nm	N max	B bar
116-43042	30	ER16	no	right/left	79	59	43	45	48	40	64	16	6000	-
116-43043	30	ER16	yes	right/left	86	59	43	45	48	40	64	16	6000	20
116-54023	40	ER25	no	right/left	79	59	63	53	71	40	78	16	6000	-
116-54024	40	ER25	yes	right/left	86	59	63	53	71	40	78	16	6000	20

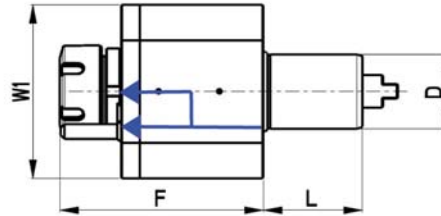
DIN 1809

VDI	A	B	C	D	E
20	48	35	6,5	10	5
30	62	45	8	12	6
40	72	53	10	18	8
50	91	78	13	24	13
60	107	94	16	29	14



AXIAL BOHR- UND FRÄSKOPF TÊTE DE PERÇAGE ET FRAISAGE
 AXIAL DRILLING AND MILLING HEAD PORTAUTENSILE MOTORIZZATO ASSIALE
 АКСИАЛЬНАЯ СВЕРЛИЛЬНО-ФРЕЗЕРНАЯ ГОЛОВКА 轴向钻铣头

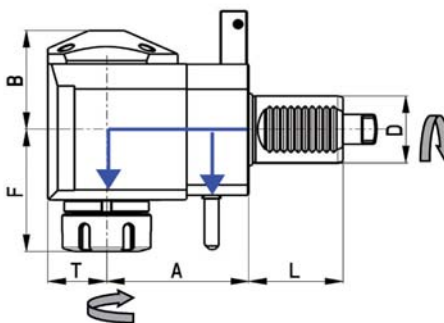
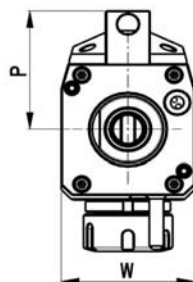
DIN1809 - DIPLOMATIC



Code N.	D	Clamping application	Internal cooling	F	L	W	W1	Max Torque (Nm)	Max Speed (rpm)	i	P bar
116-43017	30	ER25	no	87	45	64	68	28	6000	1:1	-
116-43018	30	ER25	yes	87	45	64	68	28	6000	1:1	20
116-44026	40	ER25	no	105	53	80	86	50	6000	1:1	-
116-44027	40	ER25	yes	105	53	80	86	50	6000	1:1	20
116-44028	40	ER32	no	108	53	80	86	50	6000	1:1	-
116-44029	40	ER32	yes	108	53	80	86	50	6000	1:1	20
116-44030	40	ER32	no	95	53	80	86	50	6000	1:1	-
116-44031	40	ER32	yes	95	53	80	86	50	6000	1:1	20

RADIAL BOHR- UND FRÄSKOPF TÊTE DE PERÇAGE ET FRAISAGE RADIAL
 RADIAL DRILLING AND MILLING HEAD PORTAUTENSILE MOTORIZZATO RADIALE
 РАДИАЛЬНАЯ СВЕРЛИЛЬНО-ФРЕЗЕРНАЯ ГОЛОВКА 径向钻铣头

DIN1809 - DIPLOMATIC

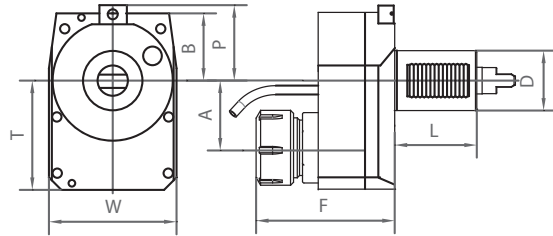


Code N.	D	Clamping application	Internal cooling	Direction	A	B	F	L	P	T	W	Max Torque (Nm)	Max Speed (rpm)	i	P bar
116-43019	30	ER25	no	right	55	48	63	45	48	29	64	28	6000	1:1	-
116-43020	30	ER25	yes	right	55	51	63	45	48	29	64	28	6000	1:1	20
116-44032	40	ER25	no	right	80	59	70	53	71	36	75	50	6000	1:1	-
116-44033	40	ER25	yes	right	80	62	70	53	71	36	75	50	6000	1:1	20
116-44034	40	ER32	no	right	80	59	74	53	71	36	75	50	6000	1:1	-
116-44035	40	ER32	yes	right	80	62	74	53	71	36	75	50	6000	1:1	20
116-44036	40	ER25	no	left	100	59	70	53	-	36	75	50	6000	1:1	-
116-44037	40	ER25	yes	left	100	62	70	53	-	36	75	50	6000	1:1	20
116-44038	40	ER32	no	left	100	59	74	53	-	36	75	50	6000	1:1	-
116-44039	40	ER32	yes	left	100	62	74	53	-	36	75	50	6000	1:1	20

* Linksausführung auf Anfrage * Left version on enquiry * Левое исполнение по запросу * Versione gauche sur demande * A richiesta la versione sinistra * 左边版本可查。

AXIAL BOHR- UND FRÄSKOPF, ZURÜCKGESETZT
 OFFSET AXIAL DRILLING AND MILLING HEAD
 АКСИАЛЬНАЯ СВЕРЛИЛЬНО-ФРЕЗЕРНАЯ ГОЛОВКА СО СМЕЩЕННЫМ ЦЕНТРОМ
 TÊTE DE PERÇAGE ET FRAISAGE AXIAL, ARRIÈRE
 PORTAUTENSILE MOTORIZZATO ASSIALE DISASSATO
 轴向钻铣头.偏移

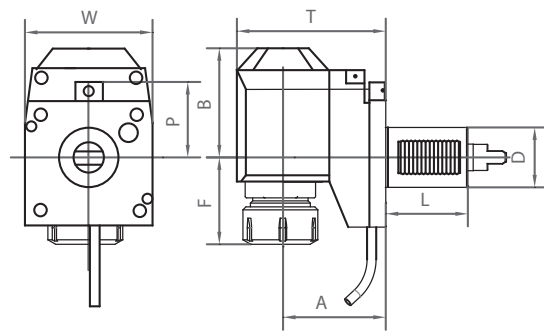
DIN 1809



Code N.	D	ER	Cooling	A	B	F	L	P	T	W	Max:Torque Nm	Nmax	I(rev.)
116-43021	30	ER25	EXT	50	40	106	45	48	90	78	14	12000	1:2

RADIAL BOHR- UND FRÄSKOPF, ZURÜCKGESETZT
 OFFSET RADIAL DRILLING AND MILLING HEAD
 РАДИАЛЬНАЯ СВЕРЛИЛЬНО-ФРЕЗЕРНАЯ ГОЛОВКА СО СМЕЩЕНИЕМ
 TÊTE DE PERÇAGE ET FRAISAGE RADIALE, ARRIÈRE
 PORTAUTENSILE MOTORIZZATO RADIALE ARRETRATO
 径向钻铣头.偏移

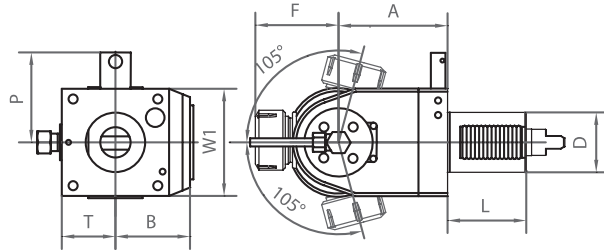
DIN 1809



Code N.	D	ER	Internal cooling	A	B	F	L	P	T	W	Max: Torque Nm	Nmax	I	P bar
116-43022	30	ER25	no	75	71	40	45	48	104	64	28	6000	1:1	-
116-43023	30	ER25	yes	75	74	40	45	48	104	64	28	6000	1:1	20
116-46007	40	ER25	no	120	92	37	53	71	156	75	50	4000	1:1	-
116-46008	40	ER25	yes	120	95	37	53	71	156	75	50	4000	1:1	20
116-46009	40	ER32	no	120	92	41	53	71	156	75	50	4000	1:1	-
116-46010	40	ER32	yes	120	95	41	53	71	156	75	50	4000	1:1	20

AXIAL-RADIAL BOHR-UND FRASKOPF TÊTE DE PERCAGE ET FRAISAGE AXIAL-RADIAL
 AXIAL-RADIAL DRILLING AND MILLING HEAD PORTAUTENSILE MOTORIZZATO ASSIALE-RADIALE
 АКСИАЛЬНО-РАДИАЛЬНАЯ ПРИВОДНАЯ ГОЛОВКА ДЛЯ СВЕРЛ И ФРЕЗ 轴-径向钻头

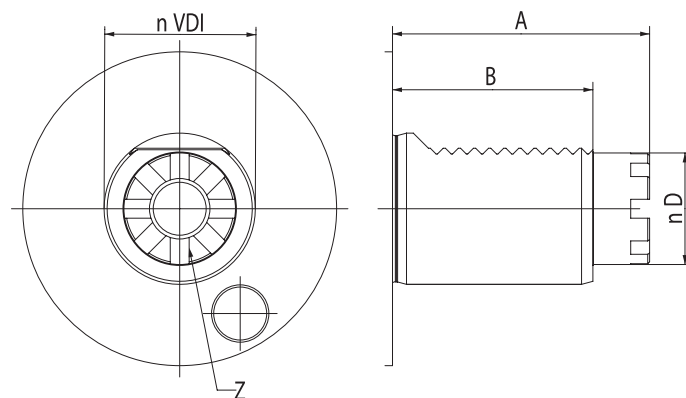
DIN 1809



Code N.	D	ER	Internal cooling	Direction	A	B	F	L	P	T	W1	Max: Torque Nm	N max
116-43044	30	ER16	no	right/left	79	59	43	45	48	40	64	16	6000
116-43045	30	ER16	yes	right/left	86	59	43	45	48	40	64	16	6000
116-54025	40	ER25	no	right/left	79	59	63	53	71	40	78	16	6000
116-54026	40	ER25	yes	right/left	86	59	63	53	71	40	78	16	6000

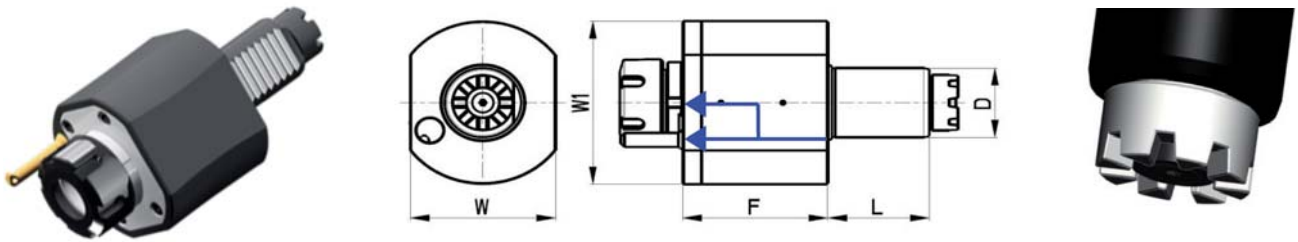
TOEM BARUFFALDI

VDI	A	B	D	Z
20	44	35	19	6
30	59	45/53	24	6
40	68	53	32	8
50	84	70	40	8
60	100	83	43	8



AXIAL BOHR- UND FRÄSKOPF
 AXIAL DRILLING AND MILLING HEAD
 АКСИАЛЬНАЯ СВЕРЛИЛЬНО-ФРЕЗЕРНАЯ ГОЛОВКА
 TÊTE DE PERÇAGE ET FRAISAGE
 PORTAUTENSILE MOTORIZZATO ASSIALE
 轴向钻铣头

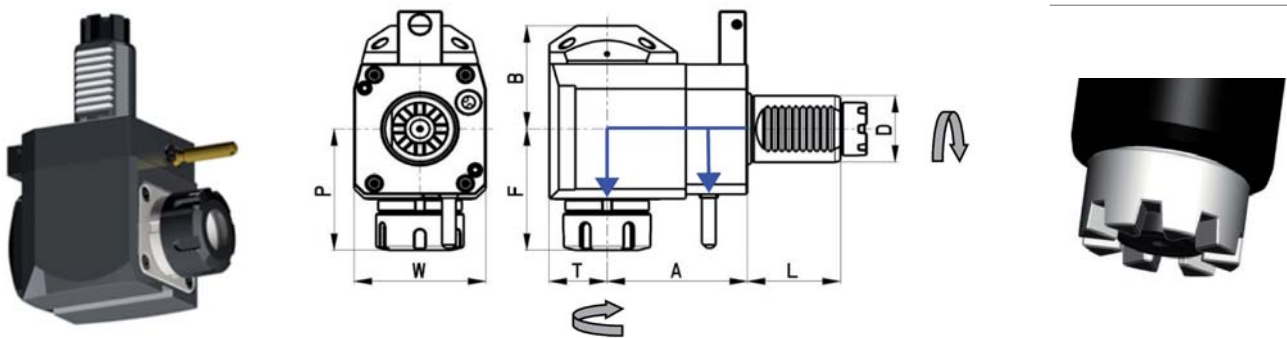
TOEM BARUFFALDI



Code N.	D	Clamping application	Internal cooling	F	L	W	W1	Max Torque (Nm)	Max Speed (rpm)	i	Z	P bar
116-43024	30	ER25	no	87	45	64	68	28	6000	1:1	6	-
116-43025	30	ER25	yes	87	45	64	68	28	6000	1:1	6	20
116-44044	40	ER25	no	105	53	80	86	50	6000	1:1	8	-
116-44045	40	ER25	yes	105	53	80	86	50	6000	1:1	8	20
116-44046	40	ER32	no	108	53	80	86	50	6000	1:1	8	-
116-44047	40	ER32	yes	108	53	80	86	50	6000	1:1	8	20

RADIAL BOHR- UND FRÄSKOPF
 RADIAL DRILLING AND MILLING HEAD
 РАДИАЛЬНАЯ СВЕРЛИЛЬНО-ФРЕЗЕРНАЯ ГОЛОВКА
 TÊTE DE PERÇAGE ET FRAISAGE RADIAL
 PORTAUTENSILE MOTORIZZATO RADIALE
 径向钻铣头

TOEM BARUFFALDI

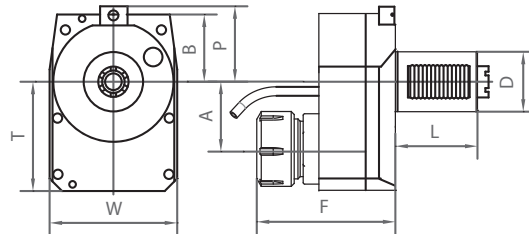


Code N.	D	Clamping application	Internal cooling	Direction	A	B	F	L	P	T	W	Max Torque (Nm)	Max Speed (rpm)	i	Z	P bar
116-43026	30	ER25	no	right	55	48	63	45	48	29	64	28	6000	1:1	6	-
116-43027	30	ER25	yes	right	55	51	63	45	48	29	64	28	6000	1:1	6	20
116-44048	40	ER25	no	right	80	59	70	53	71	36	75	50	6000	1:1	8	-
116-44049	40	ER25	yes	right	80	62	70	53	71	36	75	50	6000	1:1	8	20
116-44050	40	ER32	no	right	80	59	74	53	71	36	75	50	6000	1:1	8	-
116-44051	40	ER32	yes	right	80	62	74	53	71	36	75	50	6000	1:1	8	20

* Linksausführung auf Anfrage * Left version on enquiry * Левое исполнение по запросу * Versione gauche sur demande * A richiesta la versione sinistra * 左边版本可查。

AXIAL BOHR- UND FRÄSKOPF, ZURÜCKGESETZT
 OFFSET AXIAL DRILLING AND MILLING HEAD
 АКСИАЛЬНАЯ СВЕРЛИЛЬНО-ФРЕЗЕРНАЯ ГОЛОВКА СО СМЕЩЕННЫМ ЦЕНТРОМ
 TÊTE DE PERÇAGE ET FRAISAGE AXIAL, ARRIÈRE
 PORTAUTENSILE MOTORIZZATO ASSIALE DISASSATO
 轴向钻铣头, 偏移

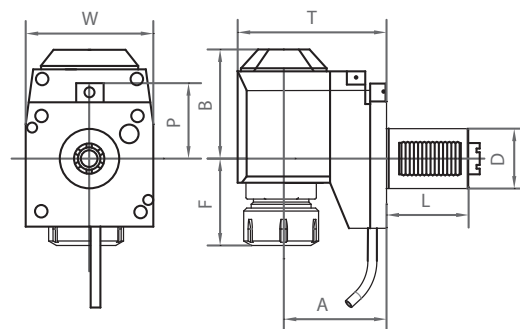
TOEM BARUFFALDI



Code N.	D	ER	Cooling	A	B	F	L	P	T	W	Max:Torque Nm	Nmax	I(rev.)	Z
116-43028	30	ER25	EXT	50	40	106	45	48	90	78	14	12000	1:2	6

RADIAL BOHR- UND FRÄSKOPF, ZURÜCKGESETZT
 OFFSET RADIAL DRILLING AND MILLING HEAD
 РАДИАЛЬНАЯ СВЕРЛИЛЬНО-ФРЕЗЕРНАЯ ГОЛОВКА СО СМЕЩЕНИЕМ
 TÊTE DE PERÇAGE ET FRAISAGE RADIALE, ARRIÈRE
 PORTAUTENSILE MOTORIZZATO RADIALE ARRETRATO
 径向钻铣头, 偏移

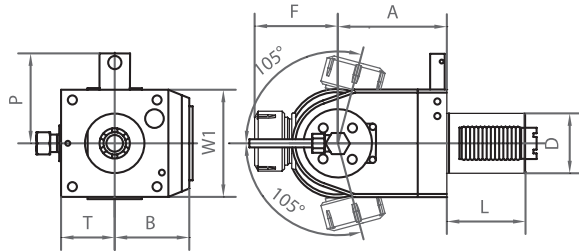
TOEM BARUFFALDI



Code N.	D	ER	Internal cooling	A	B	F	L	P	T	W	Max: Torque Nm	Nmax	I	Z	P bar
116-43029	30	ER25	no	75	71	40	45	48	104	64	28	6000	1:1	6	-
116-43030	30	ER25	yes	75	74	40	45	48	104	64	28	6000	1:1	6	20
116-46011	40	ER25	no	120	92	37	53	71	156	75	50	6000	1:1	-	-
116-46012	40	ER25	yes	120	95	37	53	71	156	75	50	6000	1:1	-	20
116-46013	40	ER32	no	120	92	41	53	71	156	75	50	6000	1:1	-	-
116-46014	40	ER32	yes	120	95	41	53	71	156	75	50	6000	1:1	-	20

AXIAL-RADIAL BOHR-UND FRASKOPF
 AXIAL-RADIAL DRILLING AND MILLING HEAD
 АКСИАЛЬНО-РАДИАЛЬНАЯ ПРИВОДНАЯ ГОЛОВКА ДЛЯ СВЕРЛ И ФРЕЗ
 TÊTE DE PERCAGE ET FRAISAGE AXIAL-RADIAL
 PORTAUTENSILE MOTORIZZATO ASSIALE-RADIALE
 轴-径向钻头

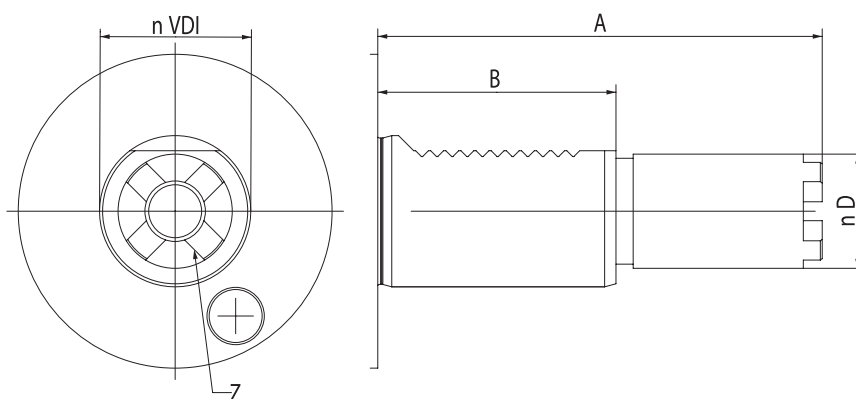
TOEM BARUFFALDI



Code N.	D	ER	Internal cooling	Direction	A	B	F	L	P	T	W1	Max: Torque Nm	Ratio	N max	P bar
116-43046	30	ER16	no	right/left	79	59	43	45	48	40	64	16	1:1	6000	-
116-43047	30	ER16	yes	right/left	86	59	43	45	48	40	64	16	1:1	6000	20
116-54027	40	ER25	yes	right/left	79	59	63	53	71	40	78	16	1:1	6000	-
116-54028	40	ER25	no	right/left	86	59	63	53	71	40	78	16	1:1	6000	20

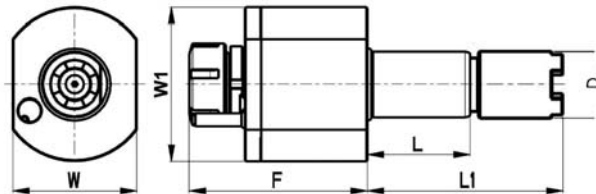
HAAS

VDI	A	B	D	Z	TYPE
40	104,85	63	30,2	4	1
40	117,55	63	30,2	4	2
40	130,25	63	30,2	4	3



AXIAL BOHR- UND FRÄSKOPF TÊTE DE PERÇAGE ET FRAISAGE
 AXIAL DRILLING AND MILLING HEAD PORTAUTENSILE MOTORIZZATO ASSIALE
 АКСИАЛЬНАЯ СВЕРЛИЛЬНО-ФРЕЗЕРНАЯ ГОЛОВКА 轴向钻头

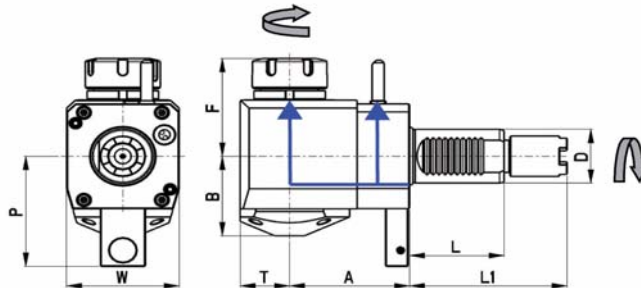
STEPPED - HAAS



Code N.	D	Clamping application	Internal cooling	F	L	L1	W	W1	Max Torque (Nm)	Max Speed (rpm)	i	P bar
116-44056	40	ER25	no	105	63	104,85	80	86	50	6000	1:1	-
116-44057	40	ER25	yes	105	63	104,85	80	86	50	6000	1:1	20
116-44058	40	ER32	no	108	63	104,85	80	86	50	6000	1:1	-
116-44059	40	ER32	yes	108	63	104,85	80	86	50	6000	1:1	20
116-44060	40	ER25	no	105	63	117,55	80	86	50	6000	1:1	-
116-44061	40	ER25	yes	105	63	117,55	80	86	50	6000	1:1	20
116-44062	40	ER32	no	108	63	117,55	80	86	50	6000	1:1	-
116-44063	40	ER32	yes	108	63	117,55	80	86	50	6000	1:1	20
116-44064	40	ER25	no	105	63	130,25	80	86	50	6000	1:1	-
116-44065	40	ER25	yes	105	63	130,25	80	86	50	6000	1:1	20
116-44066	40	ER32	no	108	63	130,25	80	86	50	6000	1:1	-
116-44067	40	ER32	yes	108	63	130,25	80	86	50	6000	1:1	20

RADIAL BOHR- UND FRÄSKOPF
 RADIAL DRILLING AND MILLING HEAD
 РАДИАЛЬНАЯ СВЕРЛИЛЬНО-ФРЕЗЕРНАЯ ГОЛОВКА
 TÊTE DE PERÇAGE ET FRAISAGE RADIAL
 PORTAUTENSILE MOTORIZZATO RADIALE
 径向钻头

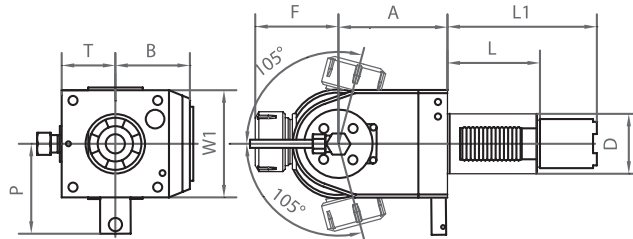
STEPPED - HAAS



Code N.	D	Clamping application	Internal cooling	Direction	A	B	F	L	L1	P	T	W	Max Torque (Nm)	Max Speed (rpm)	i
116-47001	40	ER25	no	left	69	59	70	63	104,85	82	36	75	60	6000	1:1
116-47002	40	ER25	yes	left	69	62	70	63	104,85	82	36	75	50	6000	1:1
116-47003	40	ER32	no	left	69	59	74	63	104,85	82	36	75	50	6000	1:1
116-47004	40	ER32	yes	left	69	62	74	63	104,85	82	36	75	50	6000	1:1
116-47005	40	ER25	no	left	69	59	70	63	117,55	82	36	75	50	6000	1:1
116-47006	40	ER25	yes	left	69	62	70	63	117,55	82	36	75	50	6000	1:1
116-47007	40	ER32	no	left	69	59	74	63	117,55	82	36	75	50	6000	1:1
116-47008	40	ER32	yes	left	69	62	74	63	117,55	82	36	75	50	6000	1:1
116-47009	40	ER32	no	left	69	59	70	63	130,25	82	36	75	50	6000	1:1
116-47010	40	ER25	yes	left	69	62	70	63	130,25	82	36	75	50	6000	1:1
116-47011	40	ER25	no	left	69	59	74	63	130,25	82	36	75	50	6000	1:1
116-47012	40	ER32	yes	left	69	62	74	63	130,25	82	36	75	50	6000	1:1
116-44068	40	ER25	no	left	80	59	70	63	104,85	82	36	75	50	6000	1:1
116-44069	40	ER25	yes	left	80	62	70	63	104,85	82	36	75	50	6000	1:1
116-44070	40	ER32	no	left	80	59	74	63	104,85	82	36	75	50	6000	1:1
116-44071	40	ER32	yes	left	80	62	74	63	104,85	82	36	75	50	6000	1:1
116-44072	40	ER25	no	left	80	59	70	63	117,55	82	36	75	50	6000	1:1
116-44073	40	ER25	yes	left	80	62	70	63	117,55	82	36	75	50	6000	1:1
116-44074	40	ER32	no	left	80	59	74	63	117,55	82	36	75	50	6000	1:1
116-44075	40	ER32	yes	left	80	62	74	63	117,55	82	36	75	50	6000	1:1
116-44076	40	ER25	no	left	80	59	70	63	130,25	82	36	75	50	6000	1:1
116-44077	40	ER25	yes	left	80	62	70	63	130,25	82	36	75	50	6000	1:1
116-44078	40	ER32	no	left	80	59	74	63	130,25	82	36	75	50	6000	1:1
116-44079	40	ER32	yes	left	80	62	74	63	130,25	82	36	75	50	6000	1:1

AXIAL-RADIAL BOHR-UND FRASKOPF
 AXIAL-RADIAL DRILLING AND MILLING HEAD
 АКСИАЛЬНО-РАДИАЛЬНАЯ ПРИВОДНАЯ ГОЛОВКА ДЛЯ СВЕРЛ И ФРЕЗ
 TÊTE DE PERCAGE ET FRAISAGE AXIAL-RADIAL
 PORTAUTENSILE MOTORIZZATO ASSIALE-RADIALE
 轴-径向钻头

STEPPED-HAAS

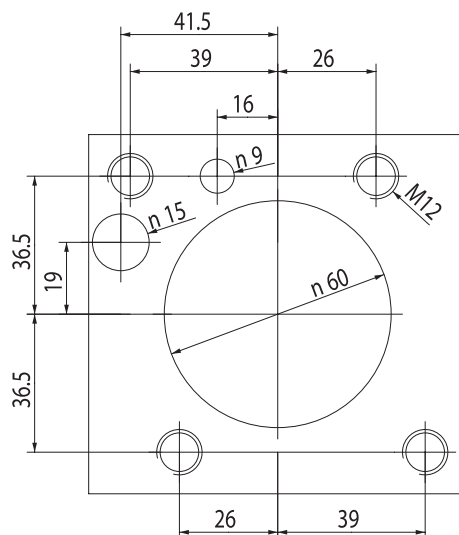


Code N.	D	ER	Internal cooling	Direction	A	B	F	L	L1	P	T	W1	Max: Torque Nm	Ratio	N max
116-54029	40	ER25	no	right/left	79	59	63	63	104,85	82	40	78	16	1:1	6000
116-54030	40	ER25	yes	right/left	86	59	63	63	104,85	82	40	78	16	1:1	6000
116-54031	40	ER25	no	right/left	79	59	63	63	117,55	82	40	78	16	1:1	6000
116-54032	40	ER25	yes	right/left	86	59	63	63	117,55	82	40	78	16	1:1	6000
116-54033	40	ER25	no	right/left	79	59	63	63	130,25	82	40	78	16	1:1	6000
116-54034	40	ER25	yes	right/left	86	59	63	63	130,25	82	40	78	16	1:1	6000

OKUMA BMT60

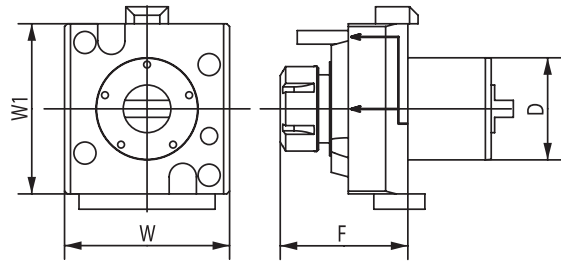
LB2000 EX M - LB2500 EX M - LB3000 EX M

CONNECTION TURRET OKUMA BMT60



AXIAL BOHR- UND FRÄSKOPF
 AXIAL DRILLING AND MILLING HEAD
 АКСИАЛЬНАЯ СВЕРЛИЛЬНО-ФРЕЗЕРНАЯ ГОЛОВКА
 TÊTE DE PERÇAGE ET FRAISAGE
 PORTAUTENSILE MOTORIZZATO ASSIALE
 轴向钻铣头

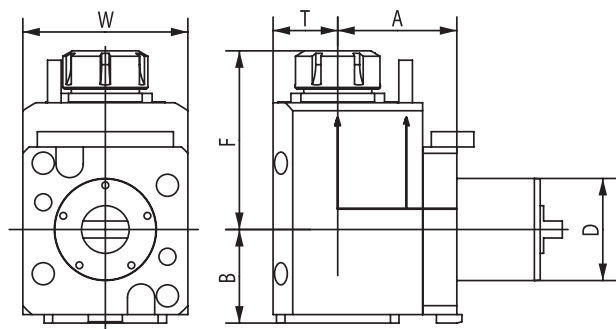
OKUMA BMT60



Code N.	D	ER	Internal Cooling	F	W	W1	Torque (Nm)	Nmax (rpm)	Ratio	P (bar)
124-06005	60	ER32	no	87	97	100	70	6000	1:1	-
124-06006	60	ER32	yes	87	97	100	70	6000	1:1	20

RADIAL BOHR- UND FRÄSKOPF
 RADIAL DRILLING AND MILLING HEAD
 РАДИАЛЬНАЯ СВЕРЛИЛЬНО-ФРЕЗЕРНАЯ ГОЛОВКА
 TÊTE DE PERÇAGE ET FRAISAGE RADIAL
 PORTAUTENSILE MOTORIZZATO RADIALE
 径向钻铣头

OKUMA BMT60

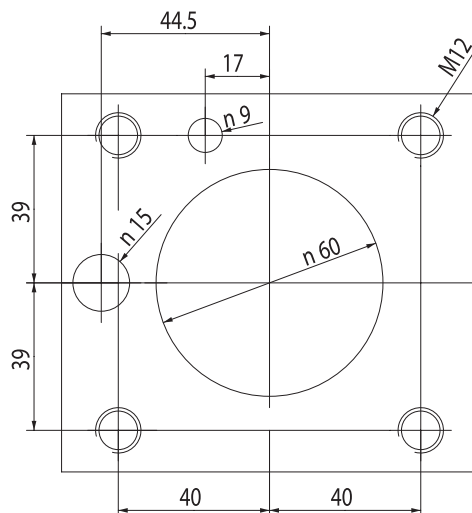


Code N.	D	ER	Internal Cooling	Direction	A	B	F	T	W	Torque (Nm)	Nmax (rpm)	Ratio	P (bar)
124-06007	60	ER32	no	right/left	70	59	111	38	94	70	6000	1:1	-
124-06008	60	ER32	yes	right/left	70	59	111	38	94	70	6000	1:1	20

OKUMA BMT60

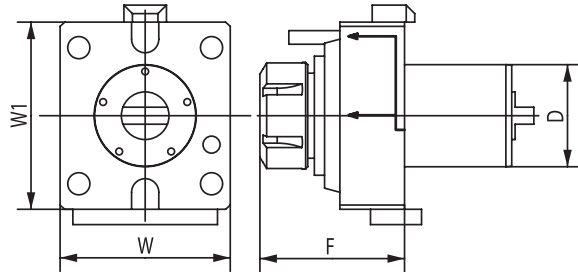
LB4000 EX M

CONNECTION TURRET OKUMA BMT60



AXIAL BOHR- UND FRÄSKOPF
 AXIAL DRILLING AND MILLING HEAD
 АКСИАЛЬНАЯ СВЕРЛИЛЬНО-ФРЕЗЕРНАЯ ГОЛОВКА
 TÊTE DE PERÇAGE ET FRAISAGE
 PORTAUTENSILE MOTORIZZATO ASSIALE
 轴向钻铣头

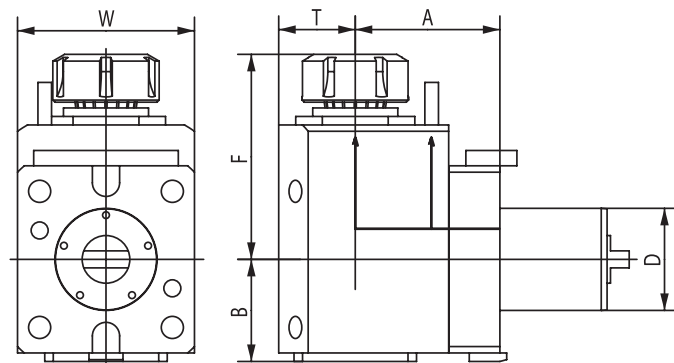
OKUMA BMT60



Code N.	D	ER	Internal Cooling	F	W	W1	Torque (Nm)	Nmax (rpm)	Ratio	P (bar)
124-06009	60	ER40	no	82	100	110	80	6000	1:1	-
124-06010	60	ER40	yes	82	100	110	80	6000	1:1	20

RADIAL BOHR- UND FRÄSKOPF
 RADIAL DRILLING AND MILLING HEAD
 РАДИАЛЬНАЯ СВЕРЛИЛЬНО-ФРЕЗЕРНАЯ ГОЛОВКА
 TÊTE DE PERÇAGE ET FRAISAGE RADIAL
 PORTAUTENSILE MOTORIZZATO RADIALE
 径向钻铣头

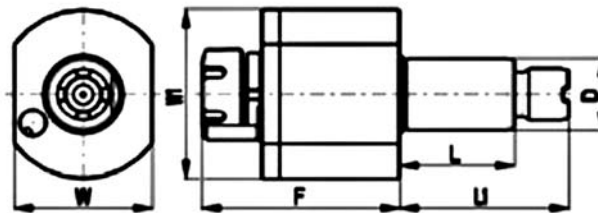
OKUMA BMT60



Code N.	D	ER	Internal Cooling	Direction	A	B	F	T	W	Torque (Nm)	Nmax (rpm)	Ratio	P (bar)
124-06011	60	ER40	no	right/left	85	64	121	44	100	80	6000	1:1	-
124-06012	60	ER40	yes	right/left	85	64	121	44	100	80	6000	1:1	20

AXIAL BOHR- UND FRÄSKOPF TÊTE DE PERÇAGE ET FRAISAGE
 AXIAL DRILLING AND MILLING HEAD PORTAUTENSILE MOTORIZZATO ASSIALE
 АКСИАЛЬНАЯ СВЕРЛИЛЬНО-ФРЕЗЕРНАЯ ГОЛОВКА 轴向钻铣头

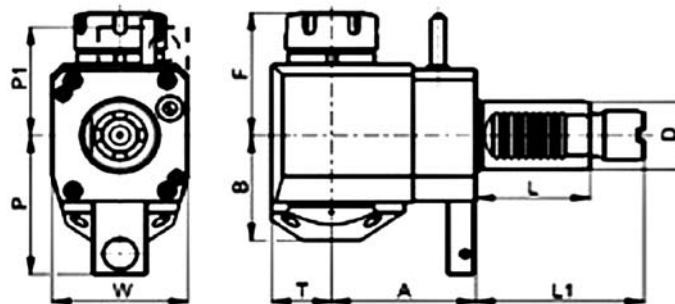
STEPPED - OKUMA



Code N.	D	Toolgrip	Internal cooling	F	L	L1	W	W1	Torque Nm	Speed rpm	Ratio	P bar
116-43031	30	ER25	no	87	55	69	64	68	28	6000	1:1	-
116-43032	30	ER25	yes	87	55	69	64	68	28	6000	1:1	20
116-44098	40	ER25	no	105	63	93	80	86	50	6000	1:1	-
116-44099	40	ER25	yes	105	63	93	80	86	50	6000	1:1	20
116-54001	40	ER32	no	108	63	93	80	86	50	6000	1:1	-
116-54002	40	ER32	yes	108	63	93	80	86	50	6000	1:1	20
116-54003	40	ER25	no	105	63	101	80	86	50	6000	1:1	-
116-54004	40	ER25	yes	105	63	101	80	86	50	6000	1:1	20
116-54005	40	ER32	no	108	63	101	80	86	50	6000	1:1	-
116-54006	40	ER32	yes	108	63	101	80	86	50	6000	1:1	20

RADIAL BOHR- UND FRÄSKOPF TÊTE DE PERÇAGE ET FRAISAGE RADIAL
 RADIAL DRILLING AND MILLING HEAD PORTAUTENSILE MOTORIZZATO RADIALE
 РАДИАЛЬНАЯ СВЕРЛИЛЬНО-ФРЕЗЕРНАЯ ГОЛОВКА 径向钻铣头

STEPPED - OKUMA

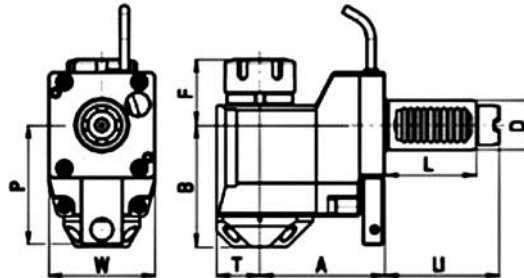


Code N.	D	Toolgrip	Internal cooling	Direction	A	B	F	L	L1	P	T	W
116-43033	30	ER25	no	right	85	48	63	55	69	-	29	64
116-43034	30	ER25	yes	right	85	51	63	55	69	-	29	64
116-43035	30	ER25	no	left	55	48	63	55	69	72	29	64
116-43036	30	ER25	yes	left	55	51	63	55	69	72	29	64
116-54007	40	ER25	no	left	80	59	70	63	93	82	36	75
116-54008	40	ER25	yes	left	80	62	70	63	93	82	36	75
116-54009	40	ER32	no	left	80	59	74	63	93	82	36	75
116-54010	40	ER32	yes	left	80	62	74	63	93	82	36	75
116-54011	40	ER25	no	left	80	59	70	63	101	82	36	75
116-54012	40	ER25	yes	left	80	62	70	63	101	82	36	75
116-54013	40	ER32	no	left	80	59	74	63	101	82	36	75
116-54014	40	ER32	yes	left	80	62	74	63	101	82	36	75
116-54015	40	ER25	no	right	80	59	70	63	93	-	36	75
116-54016	40	ER25	yes	right	80	62	70	63	93	-	36	75
116-54017	40	ER32	no	right	80	59	74	63	93	-	36	75
116-54018	40	ER32	yes	right	80	62	74	63	93	-	36	75

RADIAL BOHR- UND FRÄSKOPF
 OFFSET RADIAL DRILLING AND MILLING HEAD
 РАДИАЛЬНАЯ СВЕРЛИЛЬНО-ФРЕЗЕРНАЯ ГОЛОВКА

TÊTE DE PERÇAGE ET FRAISAGE RADIAL
 PORTAUTENSILE MOTORIZZATO RADIALE ARRETRATO
 径向钻铣头

STEPPED - OKUMA

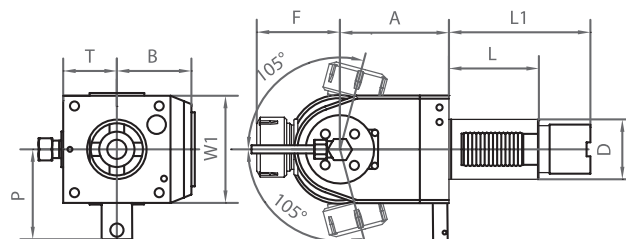


Code N.	D	Toolgrip	Internal cooling	Direction	A	B	F	L	L1	P	T	W	Torque Nm	Speed rpm		P bar
116-43038	30	ER25	no	left	75	71	40	55	69	72	29	64	28	6000	1:1	-
116-43039	30	ER25	yes	left	75	74	40	55	69	72	29	64	28	6000	1:1	20
116-48001	40	ER25	no	left	120	92	37	63	93	82	36	75	50	6000	1:1	-
116-48002	40	ER25	yes	left	120	95	37	63	93	82	36	75	50	6000	1:1	20
116-48003	40	ER32	no	left	120	92	41	63	93	82	36	75	50	6000	1:1	-
116-48004	40	ER32	yes	left	120	95	41	63	93	82	36	75	50	6000	1:1	20
116-48005	40	ER25	no	left	120	92	37	63	101	82	36	75	50	6000	1:1	-
116-48006	40	ER25	yes	left	120	95	37	63	101	82	36	75	50	6000	1:1	20
116-48007	40	ER32	no	left	120	92	41	63	101	82	36	75	50	6000	1:1	-
116-48008	40	ER32	yes	left	120	95	41	63	101	82	36	75	50	6000	1:1	20

AXIAL-RADIAL BOHR-UND FRÄSKOPF
 AXIAL-RADIAL DRILLING AND MILLING HEAD
 АКСИАЛЬНО-РАДИАЛЬНАЯ ПРИВОДНАЯ ГОЛОВКА ДЛЯ СВЕРЛ И ФРЕЗ

TÊTE DE PERÇAGE ET FRAISAGE AXIAL-RADIAL
 PORTAUTENSILE MOTORIZZATO ASSIALE-RADIALE
 轴-径向钻铣头

STEPPED-OKUMA



Code N.	D	ER	Internal cooling	Direction	A	B	F	L	L1	P	T	W1	Max: Torque Nm	N max	P bar
116-43048	30	ER16	no	right/left	79	59	43	55	69	57	40	64	16	6000	-
116-43049	30	ER16	yes	right/left	86	59	43	55	69	57	40	64	16	6000	20
116-54035	40	ER25	no	right/left	79	59	63	63	93	82	40	78	16	6000	-
116-54036	40	ER25	yes	right/left	86	59	63	63	93	82	40	78	16	6000	20
116-54037	40	ER25	no	right/left	79	59	63	63	101	82	40	78	16	6000	-
116-54038	40	ER25	yes	right/left	86	59	63	63	101	82	40	78	16	6000	20

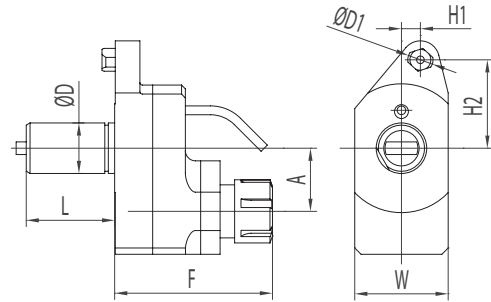
KINTEK
COMPONENTI INNOVATIVI TECNOMECCANICI

MAZAK



AXIAL BOHR- UND FRÄSKOPF TÊTE DE PERÇAGE ET FRAISAGE
 AXIAL DRILLING AND MILLING HEAD PORTAUTENSILE MOTORIZZATO ASSIALE
 АКСИАЛЬНАЯ СВЕРЛИЛЬНО-ФРЕЗЕРНАЯ ГОЛОВКА 轴向钻铣头

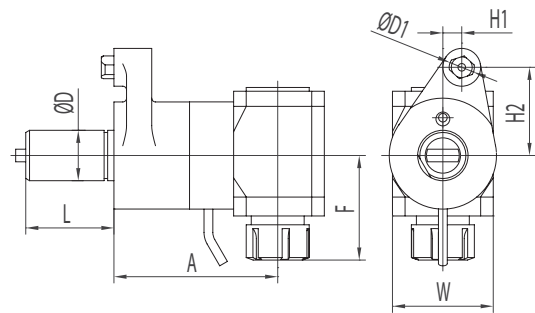
MAZAK



Code N.	D	ER	A	D1	F	H1	H2	L	W	Nmax	I
116-54019	40	ER32	50	20	121	15	70	70	74	-	1:1

RADIAL BOHR- UND FRÄSKOPF TÊTE DE PERÇAGE ET FRAISAGE RADIAL
 RADIAL DRILLING AND MILLING HEAD PORTAUTENSILE MOTORIZZATO RADIALE
 РАДИАЛЬНАЯ СВЕРЛИЛЬНО-ФРЕЗЕРНАЯ ГОЛОВКА 径向钻铣头

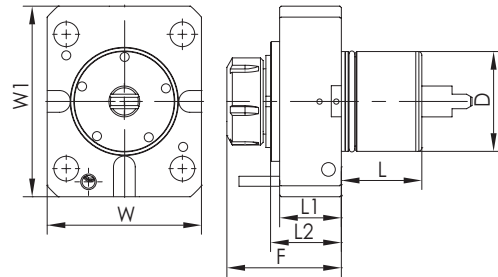
MAZAK



Code N.	D	ER	A	D1	F	H1	H2	L	W	N	I
116-54020	40	ER32	130	20	83	15	70	70	80	-	1:1

AXIAL BOHR- UND FRÄSKOPF
 AXIAL DRILLING AND MILLING HEAD
 АКСИАЛЬНАЯ СВЕРЛИЛЬНО-ФРЕЗЕРНАЯ ГОЛОВКА
 TÊTE DE PERÇAGE ET FRAISAGE
 PORTAUTENSILE MOTORIZZATO ASSIALE
 轴向钻铣头

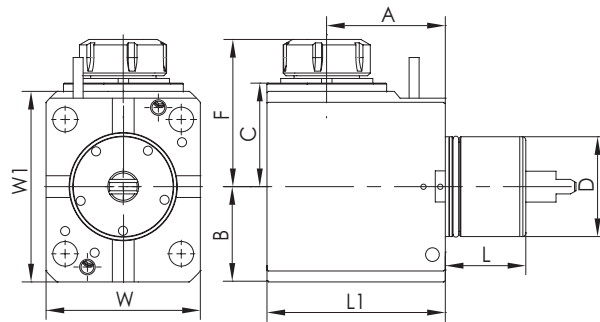
MORI SEIKI NL2000



Code N.	ER	D	F	L	L1	L2	W	W1	T(Nm)	N (rpm)	I	Internal cooling	P bar
124-06001	ER32	60	89	53	48,5	58	108	130	70	6000	1:1	no	-
124-06003	ER32	60	89	53	48,5	58	108	130	70	6000	1:1	yes	20

RADIAL BOHR- UND FRÄSKOPF
 RADIAL DRILLING AND MILLING HEAD
 РАДИАЛЬНАЯ СВЕРЛИЛЬНО-ФРЕЗЕРНАЯ ГОЛОВКА
 TÊTE DE PERÇAGE ET FRAISAGE RADIAL
 PORTAUTENSILE MOTORIZZATO RADIALE
 径向钻铣头

MORI SEIKI NL2000



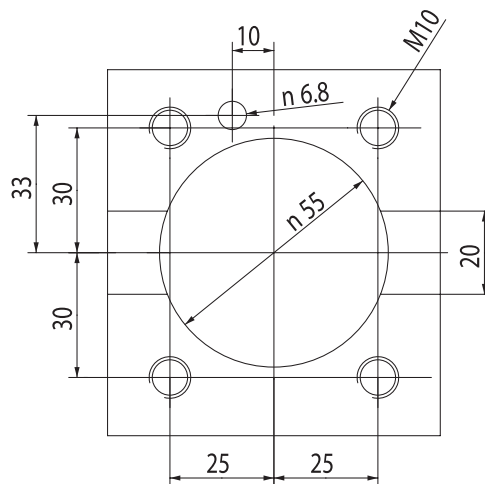
Code N.	ER	D	F	L	L1	A	B	C	W	W1	T(Nm)	N (rpm)	I	Internal cooling	P bar
124-06002	ER32	60	107	53	128	90	65	78	108	130	70	6000	1:1	no	-
124-06004	ER32	60	107	53	128	90	65	78	108	130	70	6000	1:1	yes	20

NAKAMURA-TOME BMT55

NAKAMURA-TOME AS-200 / NTM 3 / NTY3-250
SC-150M / SC-200MY / SC-250M / SuperNTJ
TMC-20 II M/ML / TW-10 / TW-20 / WT-20 II M/MY / WT150
WT-250 / WTS-150 / WTW-150 / WY-250

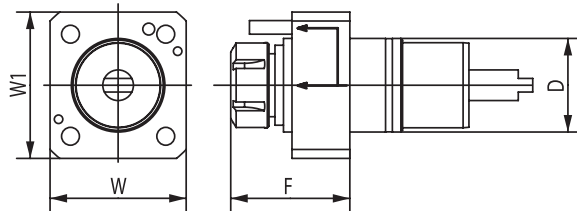
CMZ TX52/66

CONNECTION TURRET NAKAMURA-TOME BMT55



AXIAL BOHR- UND FRÄSKOPF
 AXIAL DRILLING AND MILLING HEAD
 АКСИАЛЬНАЯ СВЕРЛИЛЬНО-ФРЕЗЕРНАЯ ГОЛОВКА
 TÊTE DE PERÇAGE ET FRAISAGE
 PORTAUTENSILE MOTORIZZATO ASSIALE
 轴向钻铣头

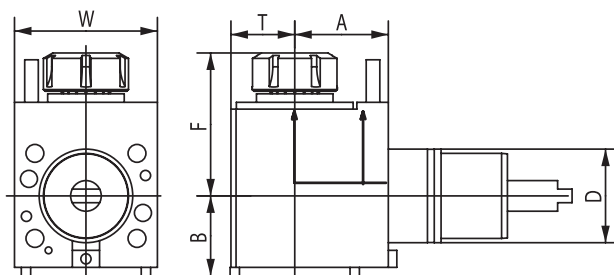
NAKAMURA-TOME



Code N.	D	ER	Internal Cooling	F	W	W1	Torque (Nm)	Nmax (rpm)	Ratio	P (bar)
124-05507	55	ER25	no	78	80	86	50	6000	1:1	-
124-05508	55	ER25	yes	78	80	86	50	6000	1:1	20

RADIAL BOHR- UND FRÄSKOPF
 RADIAL DRILLING AND MILLING HEAD
 РАДИАЛЬНАЯ СВЕРЛИЛЬНО-ФРЕЗЕРНАЯ ГОЛОВКА
 TÊTE DE PERÇAGE ET FRAISAGE RADIAL
 PORTAUTENSILE MOTORIZZATO RADIALE
 径向钻铣头

NAKAMURA-TOME

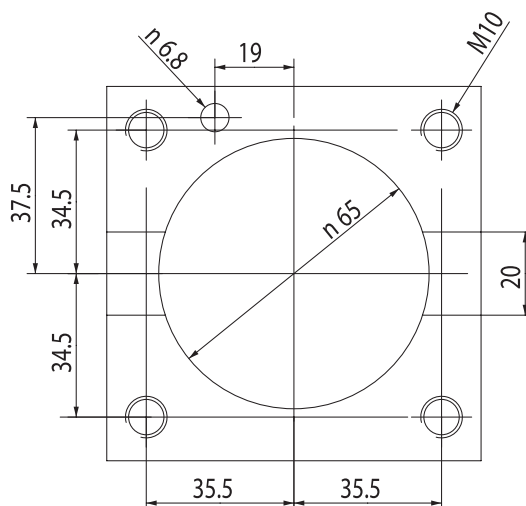


Code N.	D	ER	Internal Cooling	Direction	A	B	F	T	W	Torque (Nm)	Nmax (rpm)	Ratio	P (bar)
124-05509	55	ER25	no	right/left	55	50,3	74,8	35	84	28	6000	1:1	-
124-05510	55	ER25	yes	right/left	55	50,3	74,8	35	84	28	6000	1:1	20

NAKAMURA-TOME BMT65

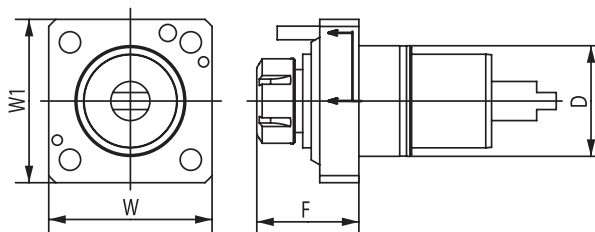
NAKAMURA-TOME WT300 / SC300 / TW20
TMC-200M / TMC-300M / SUPER NTX
TW20M / MY / MM / MMY / MMY (12 stations)
TW30M / MY / MM / MMY / MMY (16 stations)

CONNECTION TURRET NAKAMURA-TOME BMT65



AXIAL BOHR- UND FRÄSKOPF
 AXIAL DRILLING AND MILLING HEAD
 АКСИАЛЬНАЯ СВЕРЛИЛЬНО-ФРЕЗЕРНАЯ ГОЛОВКА
 TÊTE DE PERÇAGE ET FRAISAGE
 PORTAUTENSILE MOTORIZZATO ASSIALE
 轴向钻铣头

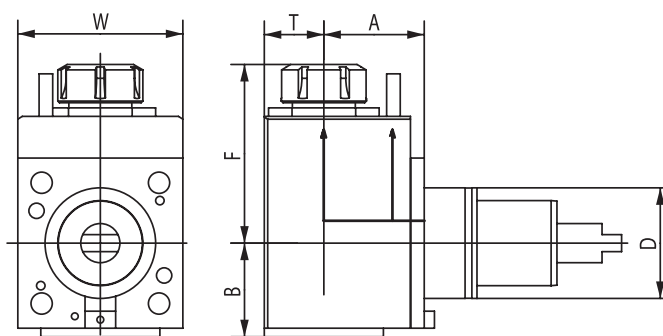
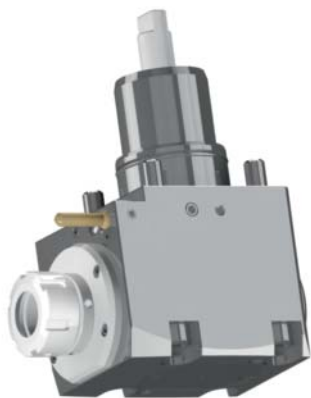
NAKAMURA-TOME



Code N.	D	ER	Internal Cooling	F	W	W1	Torque (Nm)	Nmax (rpm)	Ratio	P (bar)
124-06504	65	ER32	no	75	96	96	70	6000	1:1	-
124-06505	65	ER32	yes	75	96	96	70	6000	1:1	20

RADIAL BOHR- UND FRÄSKOPF
 RADIAL DRILLING AND MILLING HEAD
 РАДИАЛЬНАЯ СВЕРЛИЛЬНО-ФРЕЗЕРНАЯ ГОЛОВКА
 TÊTE DE PERÇAGE ET FRAISAGE RADIAL
 PORTAUTENSILE MOTORIZZATO RADIALE
 径向钻铣头

NAKAMURA-TOME



Code N.	D	ER	Internal Cooling	Direction	A	B	F	T	W	Torque (Nm)	Nmax (rpm)	Ratio	P (bar)
124-06506	65	ER32	no	right/left	65	59	110	38	96	70	6000	1:1	-
124-06507	65	ER32	yes	right/left	65	59	110	38	96	70	6000	1:1	20

**DOOSAN
BMT55
BMT65**

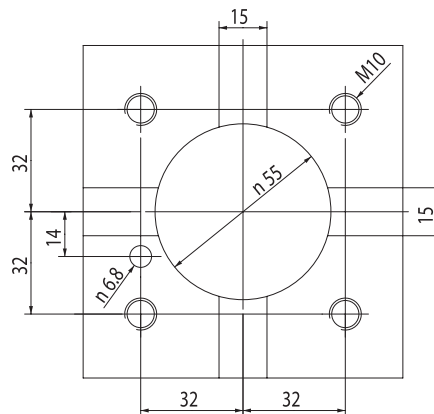


DOOSAN BMT55

DOOSAN Lynx 300 (M)
 PUMA 1500/2000/2500 (M,S,Y)
 PUMA 2100 (Y,LY,SY,LSY)
 PUMA 2100/2600/3100 M/Y/MS/SY
 PUMA 230/240/280 (M,LM,S)
 PUMA GT2100M
 PUMA H250TM
 PUMA MX2100 (ST/LST)
 PUMA TL2000/2500 (M,LM)

HARDINGE	BMT55
HWACHEON	Cutex-160
SMEC/SAMSUNG	SL 20MC
HYUNDAI WIA	SKT-180TTSY
VICTOR	Vturn-A16/A20 (YSCM)

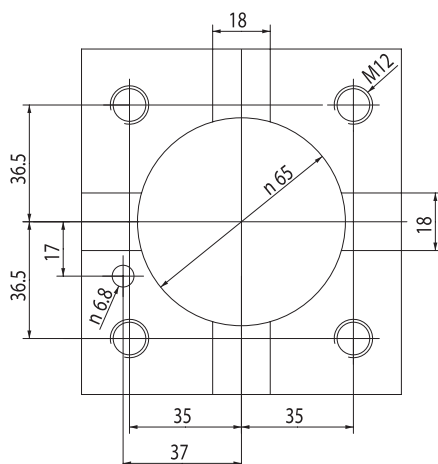
CONNECTION TURRET DOOSAN BMT55



DOOSAN BMT65

DOOSAN PUMA 2100/2600 (M,LM,MS,LMS)
 PUMA 2100/2600 (Y,LY,SY,LSY)
 PUMA 300 (M,MS,MB,MC)
 PUMA 3100 (M,LM,LY,XLM,XLY,ULM,ULY)
 PUMA MX2000/2500
 PUMA MX2600 (T,ST)
 PUMA TT2500 (MS/SY)
 PUMA V400 (M)
 PUMA VT450 (M,2SP)

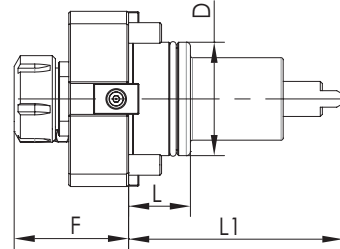
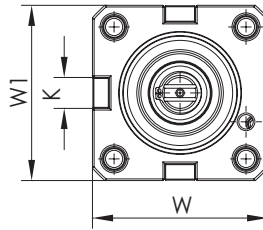
HWACHEON	Cutex-240 HI-TECH200/T2-Series HI-TECH300/400 VT-450
HYUNDAI WIA	L2100SY SKT-200/250TTSY SKT-250/300 (L,M) SKT-250/300 (MS)
MAXSIN	BMT65
SMEC/SAMSUNG	SL 25 / SL35
TONGTAI	TMT2000
VICTOR	Vturn-A26 (YSCM)



CONNECTION TURRET DOOSAN BMT65

AXIAL BOHR- UND FRÄSKOPF TÊTE DE PERÇAGE ET FRAISAGE
 AXIAL DRILLING AND MILLING HEAD PORTAUTENSILE MOTORIZZATO ASSIALE
 АКСИАЛЬНАЯ СВЕРЛИЛЬНО-ФРЕЗЕРНАЯ ГОЛОВКА 轴向钻铣头

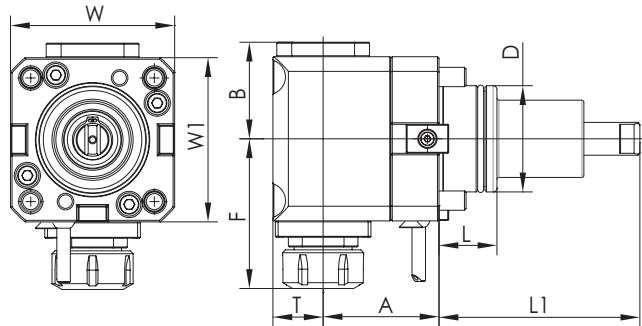
BMT



Code N.	BMT	ER	D	F	K	L	L1	W	W1	Max: Speed (RPM)	I	Max: Torque Nm	Internal cooling
124-05501	55	ER25	55	71	15	30	104	85	85	6000	1:1	50	no
124-06509	55	ER25	55	71	15	30	104	85	85	6000	1:1	50	yes
124-06501	65	ER32	65	75	18	32	112	94	94	6000	1:1	70	no
124-06508	65	ER32	65	75	18	32	112	94	94	6000	1:1	70	yes

RADIAL BOHR- UND FRÄSKOPF TÊTE DE PERÇAGE ET FRAISAGE RADIAL
 RADIAL DRILLING AND MILLING HEAD PORTAUTENSILE MOTORIZZATO RADIALE
 РАДИАЛЬНАЯ СВЕРЛИЛЬНО-ФРЕЗЕРНАЯ ГОЛОВКА 径向钻头

BMT



Code N.	BMT	ER	D	A	B	F	L	L1	T	W	W1	Max: Speed (RPM)	I	Max: Torque Nm	Internal cooling	P bar
124-05502	55	ER25	55	70	57	86	30	104	26	85	85	6000	1:1	25	no	-
124-06510	55	ER25	55	70	57	86	30	104	26	85	85	6000	1:1	25	yes	20
124-06502	65	ER32	65	72	59	110	32	112	36	94	94	6000	1:1	40	no	-
124-06512	65	ER32	65	72	59	110	32	110	38	94	94	6000	1:1	40	yes	20